

## Impact of Tourism on the Eco Development on Agra District

**Dr. Praveen Kumar**

*Assistant Professor*

*Dept. of Geography*

*D.J. College, Baraut*

*Email:praveenkumar10482@gmail.com*

**Vikas Tomer**

*Research Scholar*

*Dept. of Geography*

*D.J. College, Baraut*

**Dr. Geeta**

*Assistant Professor*

*Dept. of Geography*

*D.J. College, Baraut*

### **Abstract**

*Tourism has emerged as one of the fastest-growing global industries, playing a significant role in economic growth, cultural exchange, and environmental transformation. The concept of eco-development refers to sustainable development that balances economic progress with environmental conservation and social well-being. In this context, tourism acts as both a catalyst and a challenge for eco-development. On the positive side, tourism contributes to eco-development by generating income, creating employment opportunities, and promoting the conservation of natural resources and biodiversity. Ecotourism, in particular, encourages responsible travel practices, supports local communities, and raises awareness about environmental protection. It can lead to the development of infrastructure such as roads, sanitation, and communication facilities, which benefit both tourists and local residents. However, tourism also has negative impacts on the environment if not managed sustainably. Uncontrolled tourist activities can lead to deforestation, pollution, loss of biodiversity, and depletion of natural resources. Overcrowding in popular destinations often results in environmental degradation and pressure on local ecosystems. Additionally, cultural and social disruptions may occur in host communities.*

### **Keywords**

*Global industry, Economic growth, Cultural exchange, Eco-development, Employment generation.*

Reference to this paper should be

made as follows:

**Received: 28.03.26**

**Approved: 02.06.26**

**Dr. Praveen Kumar**

**Vikas Tomer**

**Dr. Geeta**

*Impact of Tourism on the Eco  
Development on Agra District*

*RJPSSs 2026, Vol. LII,*

*No. 1, Pg. 201-215*

*Article No.24*

Similarity Check: 07%

**Online available at:**

<https://anubooks.com/journal-volume/rjpss-vol-1ii-no1-june-2026>

**DOI:** <https://doi.org/10.31995/rjpss.2026v52i01.024>

## **Introduction**

Agra district is one of the most important tourist destinations of India, famous throughout the world for its rich historical, cultural, and architectural heritage. The presence of renowned monuments such as the Taj Mahal, Agra Fort, and Fatehpur Sikri attracts a large number of domestic and international tourists every year. Tourism has become a major source of income, employment generation, and urban development in the district. It supports various sectors such as hotels, transport, handicrafts, trade, and local services, thereby contributing significantly to the regional economy.

At the same time, tourism has a close relationship with eco-development, which refers to balanced development through economic progress, environmental protection, and social welfare. In Agra, tourism has encouraged infrastructure development, beautification projects, waste management systems, and conservation of heritage sites. However, increasing tourist pressure has also created environmental challenges such as air pollution, traffic congestion, solid waste, noise pollution, and pressure on natural resources, especially around major tourist areas.

Therefore, the study of the impact of tourism on eco-development and related factors in Agra district is highly important. It helps to understand how tourism can be managed in a sustainable way so that economic benefits are increased while environmental quality and social well-being are protected.

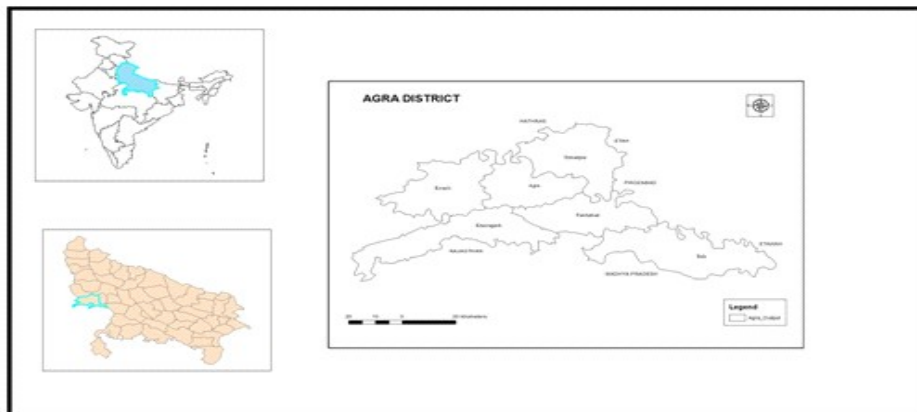
**Study Area:** The district of Agra is situated in the extreme south-western part of the state of Uttar Pradesh, extending between 27°44'2" north latitude. The district is situated between 27°24'2" north latitude and 77°28'2" to 78°54'2" east longitude. It is bounded on the west by Bharatpur district of Rajasthan, while its southern boundary is shared partly with Bharatpur district and Morena district of Madhya Pradesh. To the east, the district is bordered by Mainpuri and Etawah districts, and to the north by Mathura and Etah districts.

The total geographical area of the district is 4,805 square kilometres. The maximum length of the district is about 125 kilometres from north-west to south-east and 120 kilometres from north-east to south-west, with an average width of nearly 120 kilometres from north to south.

### **Objectives of the Study:**

1. Tourism growth in Agra significantly promotes eco-development through income and employment generation.
2. Tourism activities in Agra significantly affect the natural environment through pollution and waste generation.

3. Sustainable tourism management significantly reduces the negative environmental impacts in Agra.
4. Tourism development in Agra significantly supports conservation of heritage and natural resources.



**Summary and Conclusion:** Agra is one of the most prominent tourist destinations in India, globally recognized for its historical monuments such as the Taj Mahal, Agra Fort, and Fatehpur Sikri. The steady influx of domestic and international tourists has significantly influenced the natural environment of the district.

**i) Impact of Tourism on Natural Environment:** Tourism in Agra contributes positively by generating revenue that can be utilized for environmental conservation, urban development, and maintenance of heritage sites. It has also encouraged initiatives such as green landscaping, pollution control measures, and improved waste management systems around major tourist areas.

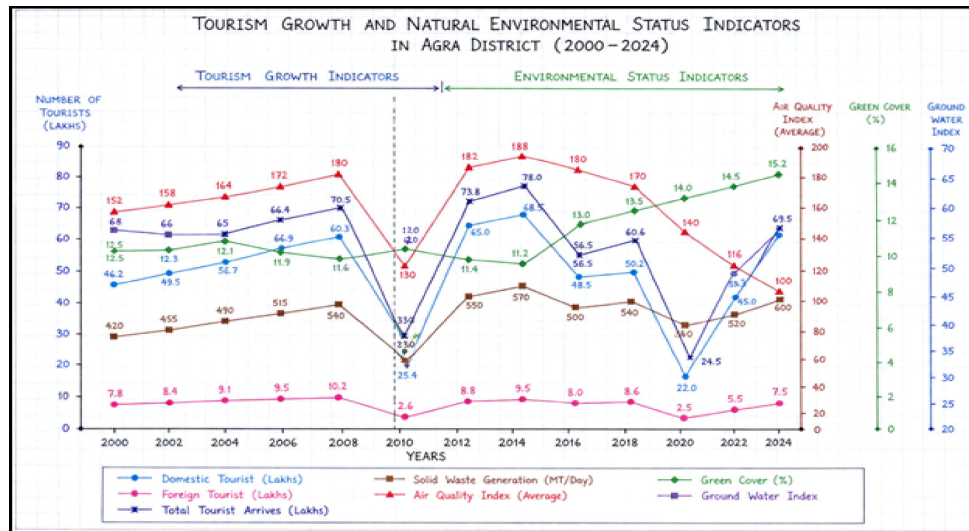
However, the growing tourism pressure has also led to several environmental concerns. Increased vehicular traffic, industrial emissions, and tourist activities have contributed to air pollution, which poses a threat to the delicate marble structure of the Taj Mahal. The pollution of the Yamuna River is another major issue, as it affects both the ecological balance and the aesthetic appeal of the surroundings. Additionally, solid waste generation, noise pollution, and overcrowding in peak seasons further degrade the natural environment.

The impact of tourism on Agra's natural environment is closely linked to factors such as urbanization, infrastructure development, environmental awareness, and government policies like the establishment of the Taj Trapezium Zone (TTZ) to control pollution levels.

**Tourism Growth and Natural Environmental Status Indicators in Agra District (2000–2024)**

Years	Domestic Tourist	Foreign Tourist	Total Tourist Arrives	No. of Hotel/Guest Houses	Solid Waste Generation (MT/Day)	Air Quality Index (Average)	Green Cover (%)	Ground Water Index	Key Environmental Index
2000	46.2	7.8	54.0	185	420	152	12.5	68	Vehicle Emission near Taj Mahal
2002	49.5	8.4	57.9	205	455	158	12.3	66	Rising PM 2.5 concentration
2004	52.7	9.1	61.8	223	490	164	12-1	65	Unregulated hotel waste disposal
2006	56.9	9.5	66.4	240	515	172	11.9	64	Traffic Congestion, waste near monuments
2008	60.3	10.2	70.5	268	540	180	11.6	63	Industrial pollution & encroachment
2010	25.4	2.6	28.0	275	330	130	12.0	67	Vehicular Emission Increase
2012	65.0	8.8	73.8	290	550	182	11.4	62	Return of mass tourism air pollution rise
2014	68.5	9.5	78.0	310	570	188	11.2	61	Overcrowding, heritage site
2016	48.5	8.0	56.5	210	500	180	13-0	67	Server Air Pollution (TIZ impact)
2018	50.2	8.6	60.6	240	540	170	13.5	65	Industrial & Traffic Pollution
2020	22.0	2.5	24.5	265	450	140	14.0	63	COVID-19 Impact
2022	45.0	5.5	50.5	290	520	116	14.5	61	Tourism Revival
2024	62.0	7.5	69.5	330	600	100	15.2	59	Rising Tourism & Pollution Pres

Source: Uttar Pradesh Tourism Department.



The table and daigram presents a detailed overview of the changing patterns of tourism growth and its impact on environmental conditions in Agra district over the period from 2000 to 2024. Agra, being home to world-famous monuments such as the Taj Mahal, has experienced continuous tourist inflow, which has significantly influenced its environmental profile. At the beginning of the period (2000), Agra recorded a moderate level of tourism with a total of 54.0 million tourist arrivals, including both domestic and foreign visitors. Over the next few years, there was a steady and consistent increase in tourist numbers, reaching 70.5 million by 2008. This growth reflects Agra’s rising popularity as a global tourist destination. However, this increasing tourist pressure also led to a rise in environmental stress. Solid waste generation increased from 420 metric tonnes per day in 2000 to 540 metric tonnes per day in 2008, indicating that tourism-related activities were contributing significantly to waste accumulation.

Simultaneously, air quality began to deteriorate. The Air Quality Index (AQI) rose from 152 in 2000 to 180 in 2008, suggesting worsening pollution levels. The primary causes included vehicular emissions, industrial activities, and increasing congestion near major tourist spots. Environmental concerns during this period included rising particulate matter (PM2.5), improper waste disposal by hotels, and traffic congestion around heritage monuments.

In 2010, a noticeable decline in tourist arrivals (28.0 million) can be observed, possibly due to external factors such as economic slowdown or other disruptions. Interestingly, this decline temporarily reduced environmental pressure, as reflected

in lower waste generation (330 MT/day) and improved AQI (130). However, this improvement was short-lived.

From 2012 to 2014, tourism rebounded strongly, reaching its peak at 78.0 million tourists in 2014. This resurgence further intensified environmental challenges. Solid waste generation rose to 570 MT/day, and AQI peaked at 188, indicating severe air pollution. Issues such as overcrowding at heritage sites, industrial pollution, and unregulated urban expansion became prominent. During this period, green cover also showed a declining trend, dropping to around 11.2%, reflecting increased land use for infrastructure development.

The period after 2016 shows fluctuating tourism trends along with continued environmental stress. Although some regulatory measures like the Taj Trapezium Zone (TTZ) were implemented to control pollution, issues such as traffic emissions and industrial pollution persisted. Groundwater levels also continued to decline steadily, indicating over-extraction due to increasing demand from hotels, industries, and urban populations.

A major turning point occurred in 2020 due to the COVID-19 pandemic, which led to a sharp decline in tourist arrivals (24.5 million). This resulted in a temporary reduction in environmental pressure, as evidenced by lower waste generation (450 MT/day) and improved air quality. This period demonstrated how reduced human activity can positively impact environmental conditions.

Post-2020, tourism gradually revived, reaching 69.5 million in 2024. Along with this recovery, environmental pressures have again started to increase, particularly in terms of waste generation (600 MT/day). However, there are also signs of improvement. The AQI has improved significantly to 100 in 2024, and green cover has increased to 15.2%, suggesting that environmental awareness and conservation efforts may be yielding positive results.

The data clearly indicates a strong relationship between tourism growth and environmental degradation in Agra district. While tourism has contributed significantly to economic development, it has also led to increased pollution, waste generation, and depletion of natural resources. In recent years, there appears to be a gradual shift towards sustainable practices, but maintaining a balance between tourism development and environmental conservation remains a critical challenge for the region.

**(ii) Impact of Tourism on Cultural Environment:** Tourism has played an important role in preserving and promoting the rich cultural heritage of Agra. The inflow of domestic and international tourists has encouraged the conservation of

historical monuments, traditional art forms, and local customs. Cultural festivals, handicrafts (such as marble inlay work), and Mughal cuisine have gained wider recognition and demand due to tourism.

It has also led to cultural exchange, where interaction between tourists and local residents promotes understanding of different traditions, lifestyles, and values. Local artisans and performers benefit economically, which helps sustain traditional skills and crafts that might otherwise decline, on the other hand, excessive tourism has led to the commercialization of culture. Many traditional practices are modified or performed mainly to satisfy tourist expectations, which may reduce their authenticity.

There is also a risk of cultural erosion, as increased exposure to global influences can gradually alter local traditions, dress, language, and lifestyle. Overcrowding at major tourist sites sometimes disrupts the cultural sanctity and daily life of local communities. Additionally, the rise of tourism-related businesses (hotels, shops, guides) has shifted focus from traditional occupations to more commercial activities, which can weaken the cultural fabric over time.

Tourism in Agra District plays a vital role in strengthening the local economy and preserving cultural heritage. However, it also places considerable strain on infrastructure and the natural environment, often leading to an overdependence on heritage-based economic activities. While it fosters a sense of cultural pride, it simultaneously gives rise to challenges such as overcrowding, pollution, and excessive waste generation. Therefore, effective and sustainable management strategies are essential to mitigate these negative impacts and ensure long-term environmental and cultural conservation.

### **(I) Positive Impacts on Cultural Environment**

**(a) Heritage Revitalization:** The problem of environmental degradation in the Agra District has become increasingly significant, particularly due to the rapid growth of tourism and urbanization. One of the most critical areas of concern is the Taj Trapezium Zone (TTZ), a specially designated area created to safeguard the world-renowned Taj Mahal and its surrounding environment.

Over the years, high levels of air pollution have emerged as a serious threat within this zone. The increasing number of vehicles, especially diesel-powered tourist buses, private cars, and local transport, has contributed significantly to the emission of harmful pollutants such as sulfur dioxide, nitrogen oxides, and particulate matter. Additionally, emissions from nearby industries, brick kilns, and generators have further worsened the air quality. These pollutants not only degrade the general environment but also directly affect the structural integrity of historical monuments.

One of the most visible impacts of this environmental degradation is the discoloration and yellowing of the white marble of the Taj Mahal. Scientific studies have shown that pollutants in the air react with moisture to form acidic compounds, leading to what is commonly referred to as “acid rain.” This process gradually corrodes the marble surface, diminishing its original shine and beauty. The yellowing effect has raised serious concerns among conservationists and environmentalists, as it threatens the aesthetic and cultural value of this iconic monument.

Traffic congestion within the TTZ has also intensified the problem. The heavy influx of tourists throughout the year leads to overcrowded roads, increased fuel consumption, and higher emission levels. Despite restrictions on certain types of vehicles near the Taj Mahal, the surrounding areas still experience considerable traffic pressure, contributing to noise pollution and environmental stress.

Furthermore, environmental degradation in Agra is not limited to air pollution alone. Dust from construction activities, improper waste disposal, and declining green cover have aggravated the situation. The reduction in vegetation decreases the natural capacity of the environment to absorb pollutants, thereby worsening air quality conditions.

In response to these challenges, several measures have been implemented, such as the promotion of cleaner fuels like CNG, restrictions on industrial emissions, and the development of green belts within the TTZ. However, the effectiveness of these measures depends on strict enforcement and public awareness.

**(b) Cultural Preservation & Exchange:** Tourism in the Agra District plays a vital role in promoting cultural preservation and facilitating cultural exchange. As one of India’s most visited heritage destinations, largely due to the iconic Taj Mahal, Agra has developed a unique cultural economy where traditional crafts, local cuisines, and artistic expressions are sustained and revitalized through tourist demand.

One of the most significant contributions of tourism is the preservation of traditional crafts. Agra is globally renowned for its exquisite marble inlay work, commonly known as Pietra Dura. This intricate art form, originally patronized during the Mughal period, involves embedding semi-precious stones into marble surfaces to create delicate floral and geometric patterns. The continuous influx of tourists has ensured steady demand for these handicrafts, encouraging artisans to preserve their skills and pass them on to future generations. Workshops and craft centers across the city not only produce these items but also demonstrate the process to visitors, creating both economic and educational value.

Similarly, the traditional embroidery art of Zardozi has gained renewed importance through tourism. This elaborate form of embroidery, using gold and

silver threads, is widely appreciated by both domestic and international tourists. The demand for zardozi products such as garments, accessories, and decorative items has provided livelihood opportunities to local artisans and helped prevent the decline of this age-old craft.

Another cultural element closely associated with Agra's identity is its famous sweet, Petha. Made from ash gourd, petha has become a symbol of the city's culinary heritage. Tourists often purchase it as a souvenir, thereby supporting local sweet industries and preserving traditional methods of preparation. The popularity of petha reflects how tourism can sustain not only artistic traditions but also local food culture. Tourism also fosters cultural exchange by bringing people from diverse backgrounds into direct contact with the local community. Visitors from different parts of India and the world interact with artisans, shopkeepers, guides, and residents, leading to a mutual exchange of ideas, traditions, and lifestyles. This interaction enhances cultural understanding and promotes the global recognition of Agra's heritage. In many cases, artisans adapt their products to suit international tastes while maintaining traditional techniques, thus creating a blend of tradition and modernity.

Moreover, cultural festivals, exhibitions, and fairs organized in Agra further strengthen this exchange. Events showcasing local crafts, music, dance, and cuisine attract tourists and provide a platform for artists to display their talents. Such initiatives not only boost tourism but also instill a sense of pride among local communities about their cultural heritage.

However, while tourism supports cultural preservation, it also poses certain challenges. Commercialization can sometimes lead to the dilution of authenticity, as artisans may alter designs or use cheaper materials to meet mass demand. Therefore, it is essential to strike a balance between economic benefits and the preservation of traditional values.

(c) **Economic Opportunity:** Tourism serves as a powerful engine of economic growth, particularly in historically and culturally rich regions such as Agra District. It generates diverse employment opportunities and supports a wide range of economic activities, both directly and indirectly.

One of the most significant contributions of tourism is the creation of jobs. A large number of local people find employment as tourist guides, interpreters, and travel coordinators. These individuals play a crucial role in enhancing visitors' experiences by providing historical, cultural, and architectural insights about iconic attractions like the Taj Mahal and the Agra Fort. This not only ensures a steady source of income for guides but also helps preserve and disseminate local knowledge and heritage.

Tourism also significantly benefits artisans and craftsmen. Agra is renowned for its traditional handicrafts, including marble inlay work, leather goods, carpets, and jewelry. The steady flow of tourists creates a strong market for these products, allowing local artisans to sustain their livelihoods and preserve traditional skills. This demand encourages the continuation of age-old crafts, which might otherwise decline due to modernization and lack of patronage.

The hospitality sector is another major beneficiary of tourism. Hotels, guest houses, restaurants, and transport services employ a large workforce, ranging from managers and chefs to housekeeping staff and drivers. The growth of tourism leads to the expansion of these services, thereby increasing job opportunities and improving income levels. Additionally, small businesses such as street vendors, food stalls, and souvenir shops also thrive due to tourist spending.

Indirectly, tourism stimulates other sectors of the economy as well. It boosts demand for agricultural products, construction materials, and local services, thereby creating a multiplier effect. For example, local farmers supply food to hotels and restaurants, while construction workers are engaged in building and maintaining tourism infrastructure.

Moreover, tourism contributes to government revenue through taxes, entry fees, and service charges. This revenue can be reinvested in infrastructure development, heritage conservation, and public services, further enhancing the region's economic growth and overall quality of life.

(d) **Event Promotion:** In Agra District, event promotion plays a significant role in enhancing tourism and preserving the region's rich cultural heritage. Among various cultural initiatives, the Taj Mahotsav stands out as a major annual event that highlights the artistic and traditional richness of the area. Organized near the iconic Taj Mahal, this grand festival serves as a vibrant platform for showcasing local arts, crafts, music, dance, and cuisine.

The Taj Mahotsav typically lasts for about ten days and attracts a large number of domestic as well as international tourists. Artisans and craftsmen from Agra and other parts of India participate in the festival, displaying exquisite handicrafts such as marble inlay work, pottery, carpets, leather goods, and traditional jewelry. This not only provides economic opportunities to local artists but also helps in preserving and promoting indigenous skills and craftsmanship.

Cultural performances are another key feature of the festival. Renowned and local artists present folk dances, classical music, and theatrical performances, reflecting the diverse cultural traditions of India. These performances help visitors

experience the cultural vibrancy of the region and create a sense of pride among local residents regarding their heritage.

Event promotion through festivals like the Taj Mahotsav also plays a crucial role in strengthening regional identity. By celebrating local traditions, customs, and artistic expressions, the festival fosters a collective cultural consciousness among the people of Agra. It reinforces the historical importance of the region and enhances its image as a center of cultural excellence.

Moreover, such events contribute significantly to tourism development. They attract visitors during specific seasons, thereby increasing tourist inflow and extending the duration of their stay. This leads to higher demand for accommodation, food services, transportation, and local products, ultimately boosting the local economy.

In addition to economic benefits, event promotion encourages infrastructural development and better urban management. Authorities often improve roads, sanitation, security, and public facilities in preparation for such large-scale events, which benefits both tourists and residents.

## **(II) Negative Impacts on Cultural Environment**

**(a) Environmental Degradation:** Environmental degradation has emerged as a serious concern in Agra District, particularly within the ecologically sensitive Taj Trapezium Zone (TTZ). This zone was specifically designated to protect the world-famous Taj Mahal and other historical monuments from the harmful effects of pollution and unregulated development. Despite these protective measures, rising environmental pressures continue to threaten both the natural environment and the structural integrity of heritage sites.

One of the primary causes of environmental degradation in the TTZ is the high level of air pollution. Emissions from vehicles, industrial units, brick kilns, and diesel generators release harmful pollutants such as sulfur dioxide, nitrogen oxides, and particulate matter into the atmosphere. These pollutants react with moisture in the air to form acidic compounds, leading to what is commonly known as acid rain. This phenomenon has a damaging effect on the marble surfaces of monuments, especially the Taj Mahal, causing gradual discoloration and the well-known yellowing of its once pristine white marble.

Heavy traffic congestion in and around Agra further aggravates the situation. The continuous movement of vehicles, particularly those using fossil fuels, significantly increases carbon emissions and deteriorates air quality. The influx of tourists adds to this pressure, as a large number of buses, cars, and auto-rickshaws operate daily near protected zones. Although certain restrictions have been imposed—

such as limiting vehicle access near the Taj Mahal—the enforcement is often inconsistent, and pollution levels remain high.

Industrial activities in nearby areas also contribute to environmental stress. Foundries, glass industries, and other small-scale manufacturing units release untreated emissions, which further degrade air quality. Although some industries have been relocated or required to switch to cleaner fuels under environmental regulations, compliance gaps still exist.

Another visible impact of environmental degradation is the deposition of dust and suspended particles on monument surfaces. This not only dulls the aesthetic appeal of historical structures but also accelerates their physical deterioration. Scientific studies have shown that particulate matter, including carbon and metallic particles, adheres to the marble surface, leading to chemical reactions that cause staining and corrosion.

In addition to air pollution, improper waste management and inadequate urban planning contribute to environmental decline. Open dumping of solid waste, poor sewage systems, and unregulated construction activities disturb the ecological balance of the region and indirectly affect heritage conservation efforts.

Efforts have been made by authorities, including the Supreme Court of India, which has issued directives to control pollution within the TTZ. Measures such as promoting the use of cleaner fuels like CNG, relocating polluting industries, and establishing green belts have shown some positive outcomes. However, rapid urbanization and increasing tourist inflow continue to pose challenges.

**(b) Overtourism & Congestion:** Overtourism has become a growing concern in Agra District, one of India's most visited tourist destinations. The presence of globally renowned monuments such as the Taj Mahal and the Agra Fort attracts millions of visitors every year. While this influx significantly contributes to the local economy, it also leads to severe congestion and a range of socio-environmental challenges.

One of the most immediate impacts of overtourism is overcrowding at major heritage sites. During peak tourist seasons and holidays, visitor numbers often exceed the carrying capacity of these monuments. Continuous foot traffic causes physical wear and tear on floors, pathways, and delicate structures. Over time, this leads to gradual deterioration, threatening the long-term preservation of these historically significant sites.

Congestion also negatively affects the overall visitor experience. Tourists often face long queues, limited space for movement, and difficulty in appreciating the architectural beauty and historical significance of monuments. The serene and aesthetic environment that these heritage sites are known for becomes compromised due to excessive crowding, noise, and disorganization.

Another major concern is the immense pressure on local infrastructure. Roads, transportation systems, parking facilities, water supply, and sanitation services become overburdened due to the high volume of tourists. Traffic congestion is a common issue in Agra, particularly in areas surrounding key attractions. This not only leads to increased travel time and frustration for visitors but also contributes to higher levels of air and noise pollution.

Public amenities such as toilets, waste disposal systems, and drinking water facilities often struggle to meet the demands of large crowds. As a result, improper waste management and littering become widespread, further degrading the environment and diminishing the city's cleanliness and appeal.

Overtourism also has social implications. The daily lives of local residents are disrupted by constant traffic, overcrowding, and rising costs of goods and services. In some cases, the excessive focus on tourism leads to the commercialization of local culture, reducing its authenticity and traditional value.

To address these challenges, sustainable tourism management strategies are essential. Measures such as regulating visitor numbers through timed entry tickets, promoting lesser-known tourist sites, improving infrastructure, and encouraging off-season travel can help reduce congestion. Additionally, awareness among tourists regarding responsible behavior is crucial for minimizing negative impacts.

**(c) Waste Management Issues:** Agra District, home to globally celebrated heritage sites such as the Taj Mahal, the Agra Fort, and several Mughal-era gardens, attracts millions of tourists annually. While this high tourist turnover contributes significantly to the local economy, it also creates severe challenges in waste management, particularly in and around historical areas.

One of the most pressing concerns is the generation of plastic waste. Tourists often carry bottled water, packaged snacks, and other single-use items, which, when discarded improperly, accumulate rapidly in public spaces. Plastic bags, wrappers, and bottles are frequently found around monuments, pathways, and gardens. Being non-biodegradable, these items persist in the environment, detracting from the aesthetic appeal of heritage sites and posing long-term ecological hazards.

Littering is another serious issue. Despite the presence of dustbins and signage encouraging responsible behavior, large crowds often neglect proper disposal, resulting in waste scattered across entry points, parking areas, and tourist pathways. During peak seasons and festivals, this problem intensifies, overwhelming cleaning staff and municipal services. The accumulation of waste not only spoils the visitor experience but can also attract pests, spread diseases, and affect the health of residents and workers in the area.

Sanitation systems in Agra's historical zones face tremendous strain due to the sheer volume of visitors. Public toilets, sewage networks, and water supply systems often operate beyond capacity, leading to unhygienic conditions and unpleasant experiences for tourists. Inefficient waste collection and delayed disposal can exacerbate these problems, particularly in crowded areas like the Taj Mahal complex and Sadar Bazaar.

The impact of poor waste management extends to environmental degradation as well. Plastics and other non-biodegradable materials often find their way into drainage systems and local water bodies, causing blockages and polluting rivers such as the Yamuna. This contributes to the decline of local biodiversity and disrupts the ecological balance of the region.

To mitigate these challenges, authorities and stakeholders have implemented several initiatives. Efforts include the placement of additional waste bins, mechanized garbage collection, plastic bans in core heritage zones, awareness campaigns for tourists, and the promotion of eco-friendly alternatives such as reusable bottles and paper packaging. Collaboration between municipal corporations, NGOs, and the tourism sector has also been essential in driving community participation and sustainable practices.

### **Conclusion**

Tourism has played a vital role in the economic, cultural, and infrastructural development of Agra District. It has generated employment, increased government revenue, promoted heritage conservation, and supported traditional crafts, festivals, and local businesses. Tourism has also encouraged urban improvements such as better roads, sanitation, waste management, and environmental awareness. As one of India's leading heritage destinations, Agra has benefited greatly from the global popularity of the Taj Mahal and other monuments.

However, the rapid growth of tourism has also created serious environmental and social challenges. Rising tourist inflow has increased air pollution, traffic congestion, waste generation, pressure on groundwater resources, and overcrowding at heritage sites. The Taj Mahal, in particular, faces threats from pollution, marble discoloration, and structural stress. Cultural commercialization and loss of authenticity are additional concerns resulting from mass tourism.

The analysis of the period 2000–2024 clearly shows a strong relationship between tourism growth and environmental pressure. While tourism contributes significantly to regional development, unmanaged expansion can damage the very resources on which tourism depends. Recent improvements in air quality and green cover indicate that policies such as the Taj Trapezium Zone and sustainable initiatives

can produce positive results.

Therefore, the future of tourism in Agra depends on achieving a balance between economic growth, cultural preservation, and environmental protection. Sustainable tourism planning, strict pollution control, improved waste management, responsible visitor behavior, and community participation are essential for ensuring long-term eco-development in Agra District.

**Reference:**

1. Archaeological Survey of India. Annual report on monument attendance. New Delhi: ASI; 2022.
2. Agapiou, A., Alexakis, D.D., Lysandrou, V., Sarris, A., Cuca, B., et al. (2015). Impact of urban sprawl to cultural heritage monuments: The case study of paphos area in Cyprus. *Journal of Cultural Heritage-Elsevier* 1296-2074.
3. Bandyopadhyay, P. (2015) Sustainable Tourism Development Plan of Agra: An Attempt to Tackle the Pulsar Effect during the Taj Festival. Canuti, P., Casagli, N., Catani, F., & Fanti, R. (2000).
4. Hydrogeological hazard and risk in archaeological sites some case studies in Italy. *Journal of Cultural Heritage* 12: Pg. **117-125**.
5. Ministry of Tourism, Government of India. National tourism policy draft. New Delhi: Government of India; 2021.
6. UNWTO. 'Overtourism'? – Understanding and managing urban tourism growth beyond perceptions. Madrid: UNWTO; 2018.
7. Singh S. Heritage management and sustainable tourism in Agra. *J Urban Conserv.* 2017.
8. Agra Municipal Corporation. City development plan (CDP) under AMRUT. Agra: AMC; 2019.
9. World Bank. Case studies in urban infrastructure for tourism. Washington (DC): World Bank; 2020.
10. UNESCO World Heritage Centre. Taj Mahal [Internet]. Paris: UNESCO; n.d. Available from: [whc.unesco.org/en/list/252/](http://whc.unesco.org/en/list/252/)
11. Singh RPB. Heritage tourism in India: a case study of Agra city. *J Herit Tour.* 2009.
12. Uttar Pradesh Tourism Department. Official website and policy documents. Lucknow: Government of Uttar Pradesh; 2023.
13. World Travel & Tourism Council. India economic impact report. London: WTTC; 2022. 11. Bhattacharyya S. The informal city: tourism and precarity in Agra. Oxford: Oxford University Press; 2018.